

## reporter: A Question Of Style

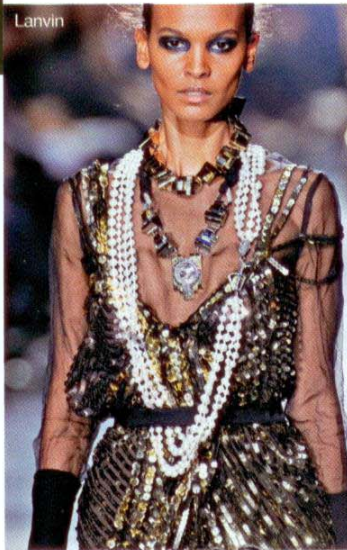


**Celebrity stylist  
Karen Ng answers  
your fashion queries**

**Q** How do you wear long, embellished necklaces without going over-the-top? What is an appropriate length for necklaces? *Lynn*

**I**t's all about necklaces this season. Be adventurous and pile on different lengths, from chokers to opera lengths, layering three and more — as seen at Givenchy and Lanvin — to create a modern, stylish and outstanding impact. It's all about accessorising with an attitude. Adorning yourself with long necklaces can make you appear slimmer and taller, while a chunky and statement-making pendant, like those from Louis Vuitton and Burberry, will highlight your neckline, draw attention to your face and direct it away from the rest of the body. Research fashion websites and the latest magazines for more ways to let your neckpiece take centre stage!

*Karen Ng runs Glitz, an image consultancy at #13-05B Ngee Ann City Tower A, Tel: 6732-1141, e-mail: image@glitzbykaren.com*



Lanvin



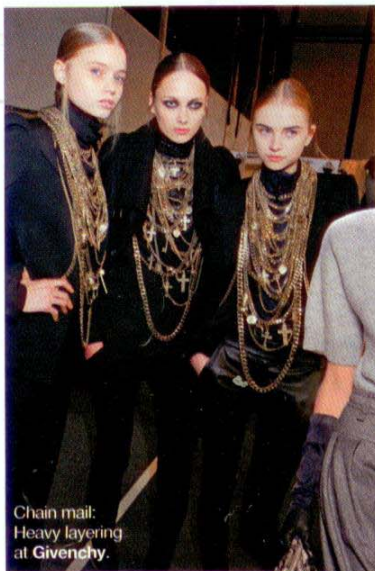
Bottega Veneta



Loewe



Statement pieces added interest to solid-colour coats at Burberry Prosum.



Chain mail: Heavy layering at Givenchy.



Dior



Marni



Louis Vuitton



Embellishments resembling a necklace at Chanel.

## Congratulations!

**Lynn, you have won yourself an Enchante™ pendant worth \$398 from Soo Kee Jewellery.**

### WANT EXPERT FASHION ADVICE?

Write to [style@mediacorp.com.sg](mailto:style@mediacorp.com.sg) with your question and put "A Question Of Style" in the subject heading. Please include your I/C and contact numbers. You get savvy advice and could win a great prize.

